

- NOTES:
- 1/ MATERIAL: 2mm THICK GRADE 304 STAINLESS STEEL 2B MILL FINISH.
 - 2/ CHANNEL TO BE SUPPLIED IN NOM. 6,000mm WITH SLEEVE JOINTS.
 - 3/ CHANNEL SYSTEM TO BE SUPPLIED WITH LEVELLING FEET ASSEMBLIES AT MIN. 3,000mm CRS. AND EITHER SIDE OF JOINT SLEEVES.
 - 4/ PLEASE SEE DRAWING No. 10384 DETAILING DIMENSIONED CHANNEL PROFILE AND BENDING DETAIL.

REVISION NOTES

TOLERANCES UNLESS OTHERWISE STATED	
UN-MACHINED CASTINGS	±2mm
UN-MACHINED STAMPINGS	±1mm
CUT-OFF LENGTHS	±1mm
MACHINED DIMENSIONS	±0.2mm
FABRICATION DIMENSIONS	±3mm



REV. A

component developments

Halesfield 10 - Telford - Shropshire - TF7 4QP
TEL: (01952) 588488 FAX: (01952) 684395
www.componentdevelopments.com
design@componentdevelopments.com

DATE 11/11/05 DRAWN JR

3604 SLOT DRAIN DETAIL

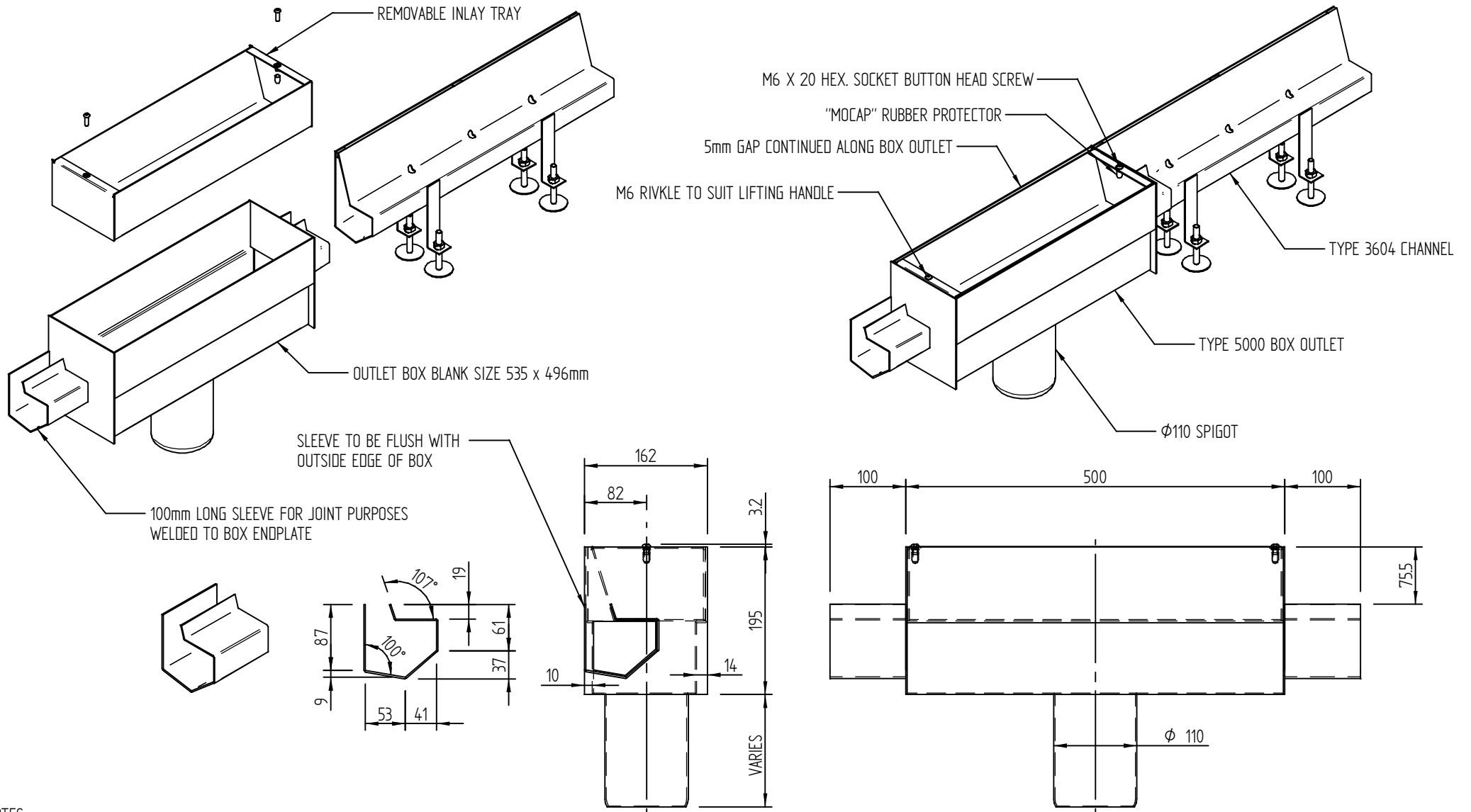
APPROVED CUST.

SCALE NTS

DRAWING No.

10444

ORDER No.



NOTES:
 1/ MATERIAL: 2mm THICK GRADE 304 STAINLESS STEEL 2B MILL FINISH
 2/ M6 THREADED LIFTING HANDLES REF. "MOSS-460619" TO BE SUPPLIED - NOM. 1 PAIR PER 5 BOXES

REVISION NOTES

TOLERANCES UNLESS OTHERWISE STATED	
UN-MACHINED CASTINGS	±2mm
UN-MACHINED STAMPINGS	±1mm
CUT-OFF LENGTHS	±1mm
MACHINED DIMENSIONS	±0.2mm
FABRICATION DIMENSIONS	±3mm



component developments
 Halesfield 10 - Telford - Shropshire - TF7 4QP
 TEL: (01952) 588488 FAX: (01952) 684395
 www.componentdevelopments.com
 design@componentdevelopments.com

TYPE 5000 BOX OUTLET ASSEMBLY TO SUIT TYPE 3604
 CHANNEL SYSTEM.

DRAWING No.
 10446-1

ORDER No.

REV. C

DATE 28/11/05 DRAWN JR SHT OF

APPROVED JJ

SCALE NTS

10446-2

ALL DIMENSIONS IN mm
UNLESS OTHERWISE STATED

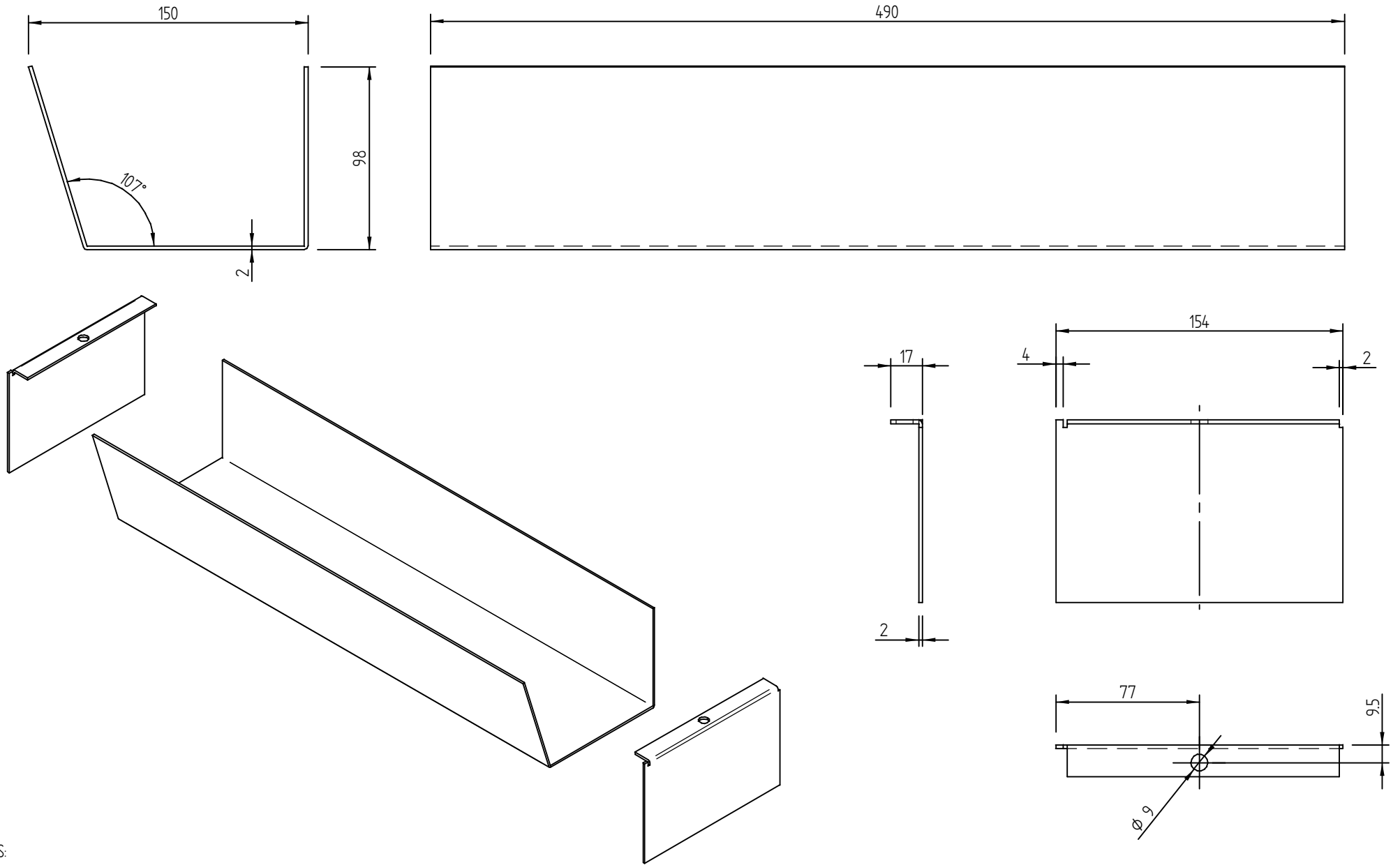
THIS DESIGN IS COPYRIGHT & THE PROPERTY OF COMPONENT DEVELOPMENTS AND
MAY NOT BE COPIED IN ANY FORM WITHOUT WRITTEN PRIOR CONSENT

FIRST ANGLE
PROJECTION

PROJECT

HIGHCROSS QUARTER (LEICESTER) - JESSOPS CONSTR. LTD

10446-2



NOTES:
MATERIAL: 2mm THICK GRADE 304 STAINLESS STEEL 2B MILL FINISH

REVISION NOTES

TOLERANCES UNLESS OTHERWISE STATED
 UN-MACHINED CASTINGS $\pm 2\text{mm}$
 UN-MACHINED STAMPINGS $\pm 1\text{mm}$
 CUT-OFF LENGTHS $\pm 1\text{mm}$
 MACHINED DIMENSIONS $\pm 0.2\text{mm}$
 FABRICATION DIMENSIONS $\pm 3\text{mm}$



component developments

Halesfield 10 - Telford - Shropshire - TF7 4QP
TEL: (01952) 588488 FAX: (01952) 684395
www.componentdevelopments.com
design@componentdevelopments.com

REV. ~

DATE 19/12/05 DRAWN JR SHT 7 OF 7

INLAY TRAY DETAIL TO SUIT TYPE 5000 BOX OUTLET
ASSEMBLY.

APPROVED JJ

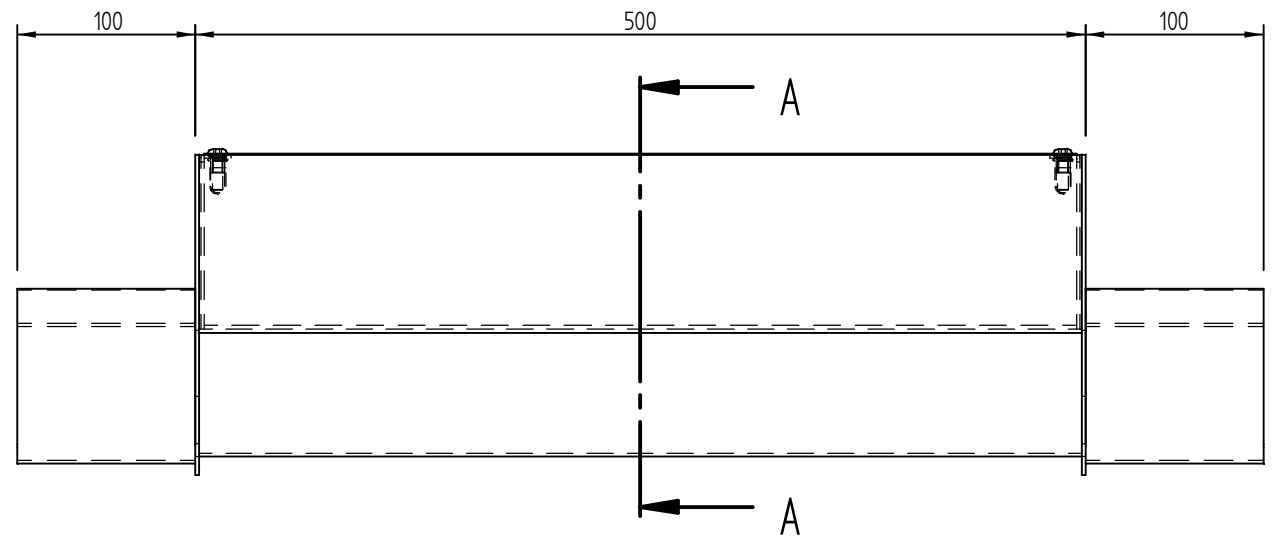
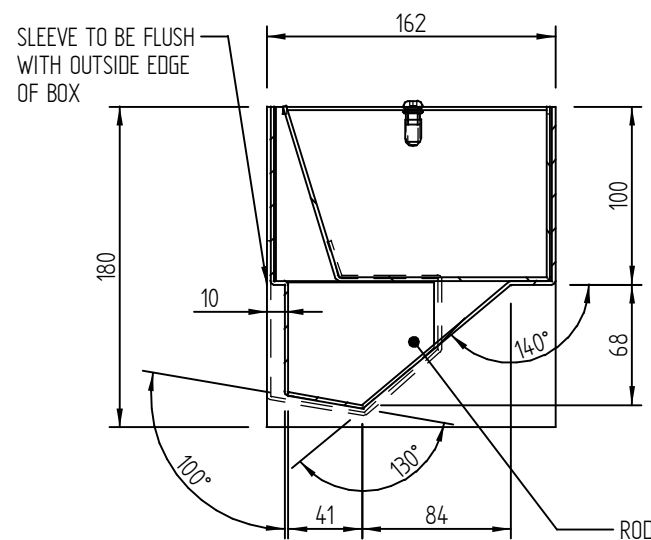
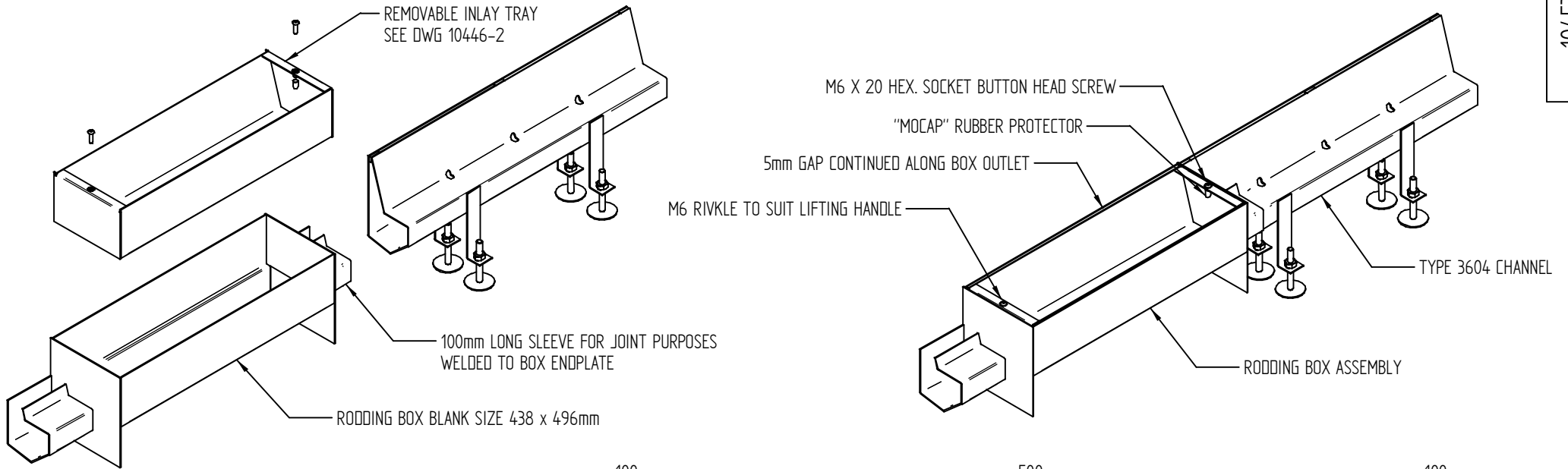
SCALE NTS

DRAWING No.

10446-2

ORDER No.

0000/00000



SECTION A-A

RODDING BOX PROFILE TO MATCH 3604 CHANNEL PROFILE

NOTES:

- 1/ MATERIAL: 2mm THICK GRADE 304 STAINLESS STEEL 2B MILL FINISH
- 2/ M6 THREADED LIFTING HANDLES REF. "MOSS-460619" TO BE SUPPLIED - NOM. 1 PAIR PER 5 BOXES

REVISION NOTES

TOLERANCES UNLESS OTHERWISE STATED	
UN-MACHINED CASTINGS	±2mm
UN-MACHINED STAMPINGS	±1mm
CUT-OFF LENGTHS	±1mm
MACHINED DIMENSIONS	±0.2mm
FABRICATION DIMENSIONS	±3mm



component developments
Halesfield 10 - Telford - Shropshire - TF7 4QP
TEL: (01952) 588488 FAX: (01952) 684395
www.componentdevelopments.com
design@componentdevelopments.com

RODDING BOX ASSEMBLY TO SUIT TYPE 3604 CHANNEL
SYSTEM.

DRAWING No.
10453

ORDER No.

REV. ~

DATE 19/12/05 DRAWN JR

APPROVED CUST.

SCALE NTS