

ALL DIMENSIONS IN MM
UNLESS OTHERWISE STATED

THIS DESIGN IS COPYRIGHT & THE PROPERTY OF COMPONENT DEVELOPMENTS
& MAY NOT BE COPIED IN ANY FORM WITHOUT PRIOR WRITTEN CONSENT.

TOLERANCES $\pm 1.0\text{mm}$ UNLESS
UNLESS OTHERWISE STATED

REMOVE ALL BURRS, SHARP
EDGES AND CORNERS

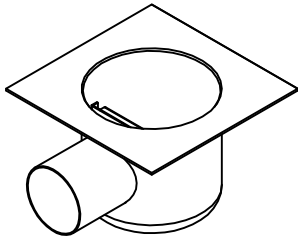
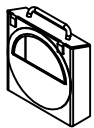
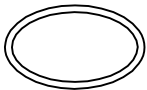
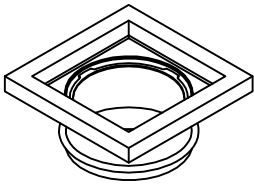
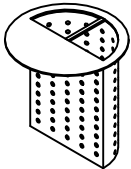
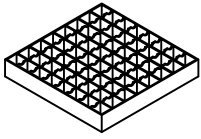
A4



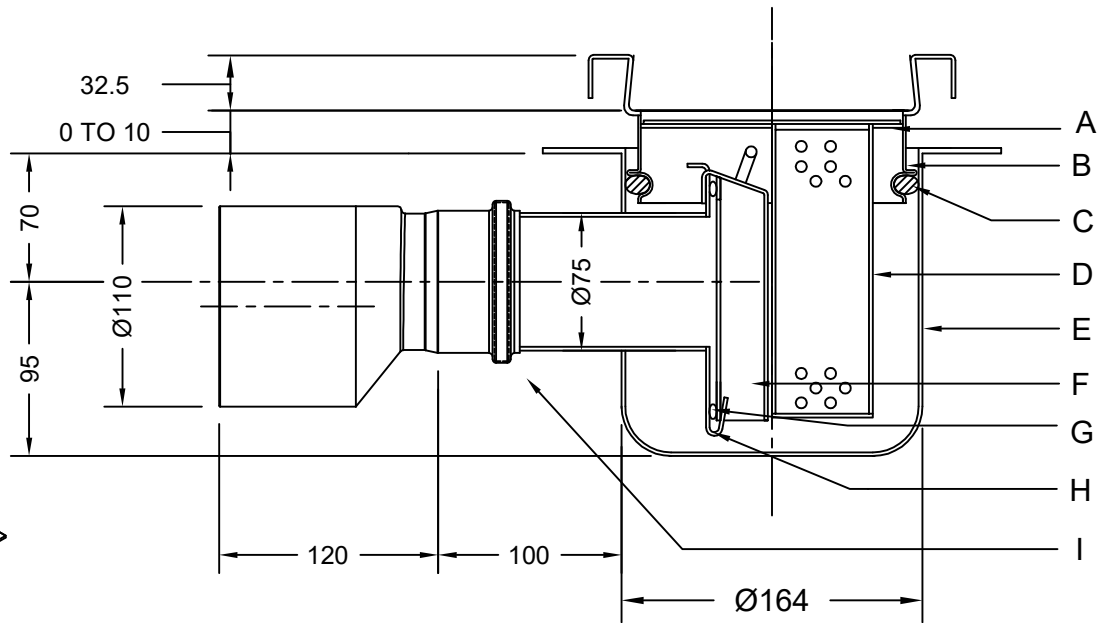
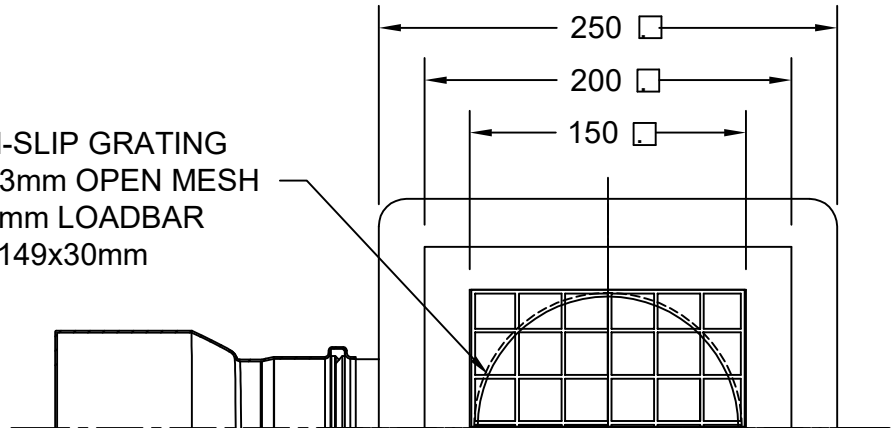
PROJECT

WORKS ORDER No.

NO. OFF REQ'D



ANTI-SLIP GRATING
23x23mm OPEN MESH
30x2mm LOADBAR
149x149x30mm



PARTS LIST

	CODE No.	DWG No.	DESCRIPTION
A	~	10187/1	BASKET SUPPORT RING
B	~	10031/1	CHANNEL OUTLET SPIGOT
C	~	10035/1	GULLY FLANGE
D	~	10050/1	GULLY SPIGOT SEAL ("O-RING")
E	~	10171/1	WASTE BASKET
F	AA532	10029/1	GULLY POT
G	SS689	10028/1	ODOUR TRAP
H	~	10030/1	OUTLET PIPE
I	SS182	SS182	DN "ETERNIT" RING
J	~	10030/2	OUTLET SPIGOT

TITLE

5150-110SWG



**component
developments**

HALESFIELD 10
TELFORD
SHROPSHIRE
TF7 4QP UK
T: 01952 588488
componentdevelopments.com

PRODUCT CODE	5150	DRAWING No.	
PRODUCT SERIES	5000	SHEET NUMBER	OF
MATERIAL	GR304	DRAWN	DRAWN
BS EN 10088-2 AISI GRADE 1.4301 304 GRADE 1.4404 316		DRAWN	REV.
		21/09/17	1:4